

Geranylgeranyl pyrophosphate stimulates γ -secretase to increase the generation of A β and APP-CTF γ

Yan Zhou,^{*,1} Anitha Suram,^{*} Chitra Venugopal,^{*} Annamalai Prakasam,^{*} Suizhen Lin,[†] Yuan Su,[†] Baolin Li,[†] Steven M. Paul,^{†,1,2} and Kumar Sambamurti^{*,1,2}

^{*}Department of Neurosciences, Medical University of South Carolina, Charleston, South Carolina, USA; and [†]Eli Lilly and Company, Indianapolis, Indiana, USA

ABSTRACT Cleavage of the amyloid precursor protein (APP) by β - and γ -secretases results in generation of the amyloid- β protein (A β), which is characteristically deposited in the brain of Alzheimer's disease patients. Inhibitors of 3-hydroxy-3-methyl-glutaryl (HMG)-CoA reductase (the statins) reduce levels of cholesterol and isoprenoids such as geranylgeranyl pyrophosphate (GGPP). Previous studies have demonstrated that cholesterol increases and statins reduce A β levels mostly by regulating β -secretase activity. In this study, we focused on the role of geranylgeranyl isoprenoids GGPP and geranylgeraniol (GGOH) in regulating A β production. Our data show that the inhibition of GGPP synthesis by statins plays an important role in statin-mediated reduction of A β secretion. Consistent with this finding, the geranylgeranyl isoprenoids preferentially increase the yield of A β of 42 residues (A β 42) in a dose-dependent manner. Our studies further demonstrated that geranylgeranyl isoprenoids increase the yield of APP-CTF γ (a.k.a. AICD) as well as A β by stimulating γ -secretase-mediated cleavage of APP-CTF α and APP-CTF β *in vitro*. Furthermore, GGOH increases the levels of the active γ -secretase complex in the detergent-insoluble membrane fraction along with its substrates, APP-CTF α and APP-CTF β . Our results indicate that geranylgeranyl isoprenoids may be an important physiological facilitator of γ -secretase activity that can foster production of the pathologically important A β 42.—Zhou, Y., Suram, A., Venugopal, C., Prakasam, A., Lin, S., Su, Y., Li, B., Paul, S. M., Sambamurti, K. Geranylgeranyl pyrophosphate stimulates γ -secretase to increase the generation of A β and APP-CTF γ . *FASEB J.* 22, 47–54 (2008)

Key Words: Alzheimer's disease • statins • mevalonic acid • amyloid precursor protein • AICD • isoprenoid

A LARGE BODY OF EVIDENCE SUGGESTS that APP metabolism is affected by alteration of the lipid microenvironment (1). The genetic link between the risk of Alzheimer's disease (AD) and the $\epsilon 4$ allele of apolipoprotein E (ApoE $\epsilon 4$), a protein involved in lipid homeostasis, was established more than a decade ago (2–5). Epidemiological studies suggest that high levels of cholesterol associated with ApoE $\epsilon 4$ may contribute to the pathogenesis of AD (6, 7). More recently, epidemiological studies by several groups have shown that statins, a group of cholesterol-lowering drugs, can markedly reduce the prevalence of AD (8, 9). However, prospective

clinical trials of statins for the prevention of AD are required to confirm these findings. Multiple studies have also shown that statins modulate APP processing and reduce A β generation both *in vitro* and *in vivo* (9–18), suggesting that the reduction of AD prevalence may be at least partly the result of decreased amyloidogenic APP processing by treatment with statins.

As discussed in a well-articulated review, a large body of literature has concluded that A β 42 levels are specifically increased by familial AD (FAD) mutations and the currently favored hypothesis is that oligomeric forms of A β are responsible for neurodegeneration in AD (19). As previously reviewed by us, A β 42 is a minor metabolite of the larger precursor protein, APP, and is generated after cleavage of APP in the ectodomain by β -secretase into sAPP β and APP-CTF β , and within the membrane by γ -secretase to A β and APP-CTF γ (a.k.a. AICD) (20). Most APP, however, is cleaved inside the A β sequence by α -secretase to sAPP α and APP-CTF α , making CTF β , and therefore A β , a minor metabolite of APP. Moreover, most A β ends at residue V40, and only a small fraction of A β ends at residue A42. The ratio of A β 42/A β 40 is increased, however, in cells bearing FAD mutations, suggesting that A β 42 is the more pathologically relevant species (21). Treatment of cells with a membrane cholesterol-extracting reagent results in a drastic reduction of A β production by inhibition of β -secretase processing (22). In addition to total cellular cholesterol, cholesterol esters have been reported to increase the generation of A β (23, 24). Studies using animal models of AD, including rabbits (25, 26), transgenic mice (27–29), and guinea pigs (14), further suggest a complex relationship between plasma cholesterol levels and A β generation. In addition, cholesterol appears to increase CTF γ , a metabolite whose role in AD pathogenesis has been poorly studied (30).

¹ Correspondence: Y.Z., Herman B. Wells Center for Pediatric Research, R4–331, 1044 W. Walnut, Indiana University School of Medicine, Indianapolis, IN 46202, USA. E-mail: Zhou2@iupui.edu; S.M.P., Eli Lilly and Company, Indianapolis, IN 46285, USA. E-mail: paul_steven_m@lilly.com; K.S., Department of Neurosciences, MUSC, BSB-403, 173 Ashley Ave., Charleston, SC 29425, USA. E-mail: sambak@musc.edu

² These authors contributed equally to this work.

doi: 10.1096/fj.07-8175com

Although cholesterol homeostasis clearly plays a role in APP metabolism, whether the cholesterol-lowering effect of statins is the only mechanism by which statins lower A β levels is far from established. In this regard, the protective effect of statins was found to be independent of their effect on blood cholesterol levels by one of the early reports (8), suggesting that statins may protect against AD through an alternative mechanism besides their cholesterol-lowering effect. It has also been shown that brain cholesterol levels and A β levels in the brain are not correlated in transgenic AD mouse model treated with atorvastatin (11) or in mice genetically engineered to have low blood cholesterol levels (31). Furthermore, γ -secretase activity in the detergent-insoluble membranes (DIMs; a.k.a. rafts, TIMs, DRMs) is not affected by the reduction of cholesterol levels with cholesterol-extracting reagent, suggesting that the γ -secretase activity in DIMs does not depend on cholesterol level *per se* (32). Statins inhibit HMG-CoA reductase, and thus reduce the synthesis of mevalonic acid and several of its important metabolites, including cholesterol and isoprenoids (such as geranylgeranyl pyrophosphate, GGPP, and farnesyl pyrophosphate, FPP). A recent report shows that GGPP plays an important role in modulating APP processing and A β production by statins (33). Other reports, including one from us, have also demonstrated that GGPP preferentially increases levels of A β 42 rather than total A β , suggesting that GGPP modulates γ -secretase activity or A β 42 turnover (34, 35). In this study, we have demonstrated that geranylgeranyl isoprenoids stimulate the processing of APP-CTF α and APP-CTF β by modulating γ -secretase. We have also provided evidence indicating that the active γ -secretase complex is increased in DIMs by treatment with GGOH.

MATERIALS AND METHODS

Materials

All chemicals were obtained from Sigma (St. Louis, MO, USA) unless otherwise specified. The rabbit antibody O443 was raised against a maleimide-activated, KLH-conjugated synthetic peptide (CKMQQNGYENPTYKFFEQMQN) that corresponds to the C-terminal 20 residues of APP, as described (36). Other antibodies used were obtained commercially as follows: 6E10 (Covance, Denver, PA, USA), anti-PS1 (Calbiochem, San Diego, CA, USA), and anti-Pen-2 (Signet, Berkeley, CA, USA); antinicastrin (Cell Signaling, Danvers, MA, USA); antifatellin-1 (BD Biosciences, Franklin Lakes, NJ, USA); and peroxidase-conjugated secondary antibodies (Jackson ImmunoResearch, West Grove, PA, USA). Lovastatin and simvastatin were purchased from Calbiochem; ELISA kits for A β 40 and A β 42 detection were purchased from IBL Co. Ltd. (Gunma, Japan) and Innogenetics (Ghent, Belgium), respectively.

Maintenance and treatment of cell culture

HEK 293 cells stably expressing the Swedish mutant form of APPK670NL (HEK293-APP^{swe}) and CHO cells stably overexpressing wild-type APP (CHO-APP^{wt}; 2B7 a kind gift from Dr. Todd Golde) were maintained in DMEM/F12 medium containing 10% fetal bovine serum (FBS) at 37°C with 5% CO₂. HEK293-APP^{swe} cells were kept in serum-free DMEM/F12 medium with 1% bovine serum albumin when treated with lovastatin or simvastatin for 48 h. When cells were treated with

GGPP or geranylgeraniol, they were kept in DMEM/F12 with 10% FBS for 24 h. After treatment, secreted A β and sAPP α in media, and full-length APP and its C-terminal fragments in lysates, were quantified as described previously (36, 37).

ELISA assay for A β quantification

A β was measured using ELISA kits purchased from IBL Co. Ltd. and Innogenetics according to manufacturer's protocols or an in-house sandwich ELISA protocol as described previously (34). The in-house assay used end-specific monoclonal antibodies 2G3 (15 μ g/ml) and 21F12 (5 μ g/ml) against A β 40 and A β 42, respectively, for capture of the indicated analytes. A second end-specific monoclonal antibody raised against A β 1–5 was biotinylated and used in combination with horseradish peroxidase-coupled streptavidin for detection using the chromogenic tetramethylbenzidine substrate.

In vitro γ -secretase assay

The efficiency of γ -secretase cleavage of APP-CTF α and APP-CTF β after treatment with GGOH was directly determined by an *in vitro* γ -secretase assay, as described previously (36). Briefly, cells were homogenized on ice in buffer A (50 mM HEPES, 150 mM NaCl, and 5 mM EDTA, pH 7.4) with a Dounce homogenizer. All subsequent steps were carried out at 4°C unless otherwise indicated. Homogenates were sequentially fractionated by centrifugation at 2500 *g* for 15 min to collect unbroken cells and nuclei, and the postnuclear supernatants were spun at 15,000 *g* for 30 min. The pellets were washed once in buffer A and resuspended in buffer B (50 mM HEPES buffer, 150 mM NaCl, pH 7.0, 5 mM EDTA, 5 mM PNT, and 1 mM thiorphan) and incubated at 37°C for 1 h. After incubation, the samples were chilled on ice to stop the reactions, membranes were removed by centrifugation at 15,000 *g* for 30 min, and the final supernatants were analyzed by Western blot to yield APP-CTF γ .

Isolation of detergent-insoluble membranes

The DIMs were prepared as described by Wada *et al.* with minor modifications (32). All steps were carried out at 4°C. Confluent cells from two culture plates (100 mm) were washed and scraped into ice-cold PBS and resuspended in 750 μ l buffer R (20 mM Tris-HCl, pH 7.4, 150 mM NaCl, 1 mM EDTA) containing 1% CHAPSO and complete protease inhibitors (Roche, Indianapolis, IN, USA). After 60 min incubation on ice, the cell lysates are adjusted to 45% sucrose with 90% sucrose, placed in the bottom of a 5 ml Beckman ultraclear centrifuge tube, and overlaid with 2 ml of 35% sucrose in buffer R, followed by 1.5 ml 5% sucrose in buffer R. After centrifugation at 100,000 *g* for 16 h at 4°C in a Beckman SW55 rotor, 10 fractions (500 μ l each) were collected from the top of the gradient.

Statistics

The data are presented as mean \pm SD and analyzed by a Student's 2-tailed *t* test ($P < 0.05$ as significant). EC₅₀ was calculated using the PRISM software (Graphpad).

RESULTS

Lovastatin lowers A β by blocking GGPP synthesis

Statins inhibit HMG-CoA reductase, thereby preventing the synthesis of cholesterol and noncholesterol isoprenoids, including GGPP. To determine the metabolite (or

metabolites) responsible for the statin-mediated changes in APP processing and A β generation, we treated HEK293-APP_{swe} cells with lovastatin alone or lovastatin supplemented with cholesterol or GGPP in serum-free medium for 48 h. In agreement with previous reports using primary neuronal cultures as well as a similar HEK293-APP_{swe} system (33), we found that high concentrations of lovastatin ($\geq 5 \mu\text{M}$; 48 h) caused an accumulation of the immature endoplasmic reticulum (ER) form of APP as well as both APP-CTF α and APP-CTF β (Fig. 1A). GGPP reversed the lovastatin-mediated increase in intracellular APP-CTFs (Fig. 1A, lane 7) but cholesterol did not (Fig. 1A, lane 8). We then determined the effects of lovastatin, GGPP, and cholesterol treatments of the same HEK293-APP_{swe} cell line on A β 40 and A β 42 levels by ELISA analysis of media (Fig. 1B, C). Lovastatin caused a dose-dependent reduction in both A β 40 and A β 42. Cholesterol failed to block the lovastatin-mediated reduction in A β levels, although it increased A β 40 as well as A β 42 in the absence of lovastatin. In contrast, GGPP fully reversed the lovastatin-mediated reduction of both A β 40 and A β 42 and also substantially increased the levels of both A β 40 and A β 42 over statin inhibitor-free control cells. In the absence of lovastatin, GGPP increased A β 42 levels to a greater extent than A β 40 levels. However, in lovastatin-treated cells, GGPP increased both A β 40 and A β 42 levels by a similar magnitude, suggesting that the normal cellular levels of GGPP may be saturating with respect to changes in A β levels. These results suggest that the reduction in A β levels by lovastatin is mediated by inhibition of GGPP rather than cholesterol. In addition, although cholesterol and GGPP increase A β , the change is probably mediated by independent mechanisms.

Dependence of A β 42 generation on GGPP

Like cholesterol, GGPP is a bioactive terminal product generated in an independent branch of the sterol/isoprenoid synthesis pathway. GGPP can also be generated from GGOH by a salvage pathway after phosphorylation by GGOH kinase (38). Thus, GGOH has been often used as a functionally equivalent reagent to restore protein pre-

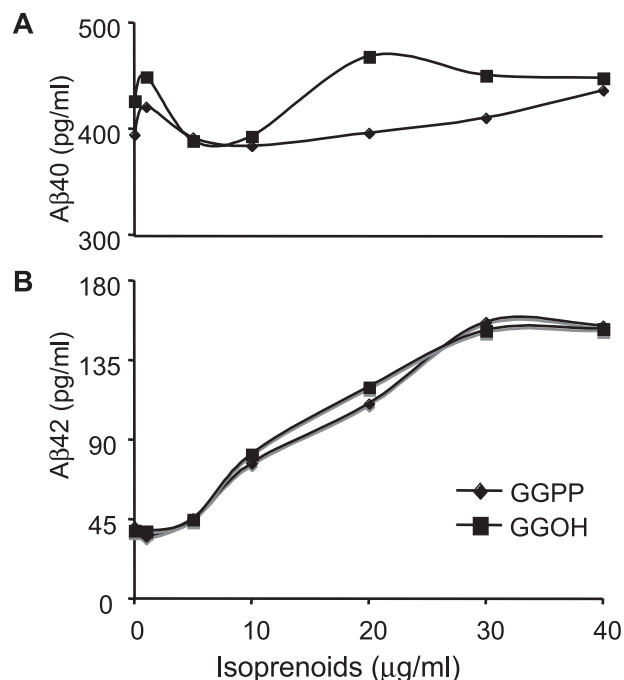


Figure 2. The concentration-dependent effect of GGPP and GGOH on A β generation. CHO-APP_wt cells were treated with different concentrations of GGPP or GGOH for 24 h and A β 40 and A β 42 in the media were measured by ELISA.

nylation in many studies (39–41). Having found that GGPP may play an important role in the statin-mediated reduction of APP processing to A β , we treated CHO cells transfected with wild-type APP (CHO-APP_wt) with different concentrations of GGPP or GGOH to determine whether the phenomenon of isoprenoid-mediated A β increase could be extended to wild-type APP and establish a dose dependence on the levels of isoprenoid. After incubation for 24 h, conditioned media from control, GGPP, and GGOH-treated CHO-APP_wt cells were collected and examined for levels of A β 40 and A β 42 by ELISA. Both GGPP and GGOH preferentially increased A β 42 levels in a concentration-dependent manner (Fig. 2). The EC₅₀s of the GGPP (MW 501.53) and GGOH (MW 290.5)-mediated increase in A β 42 were determined

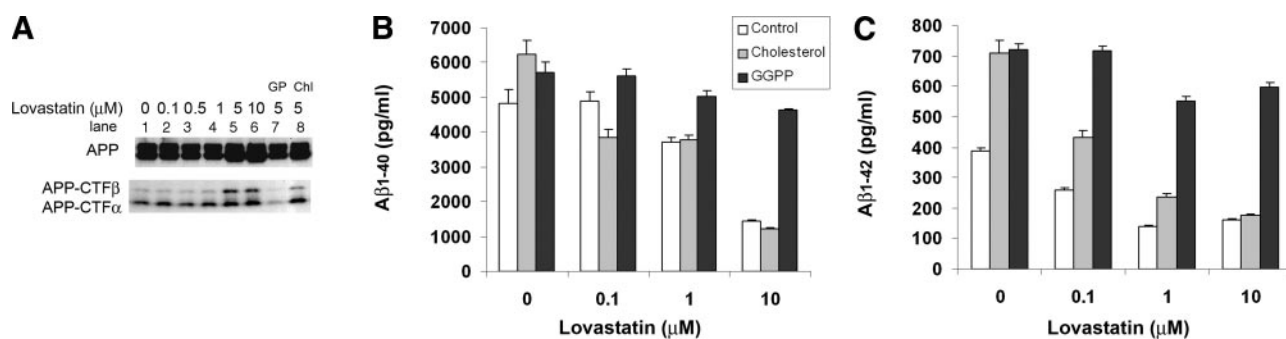


Figure 1. Effects of lovastatin on the steady-state levels of APP-CTFs and A β levels. HEK293-APP_{swe} cells were treated with different doses of lovastatin alone or in combination with 200 μM cholesterol or 15 $\mu\text{g/ml}$ GGPP for 48 h. A) APP, APP-CTF α , and APP-CTF β in cell lysates were detected by Western blot with the O443 antibody against the C-terminal 20 residues of APP. In lanes 7 and 8, cells were treated with 5 μM lovastatin supplemented with 15 $\mu\text{g/ml}$ GGPP (GP) or 200 μM cholesterol (Chl). B) A β 40 and C) A β 42 in the media were measured by ELISA.

to be 14.5 $\mu\text{g/ml}$ (28.9 μM) and 12.1 $\mu\text{g/ml}$ (41.7 μM), respectively. Because the pharmacokinetic characteristics of GGPP and GGOH in modulating A β metabolism were similar, we chose to use GGOH for most of the subsequent experiments.

GGOH increases intracellular and secreted A β 42

To determine whether the rise in secreted A β levels is due to the increase in the production of A β or due to the efficiency of its release from cells, we determined the levels of intracellular A β after GGOH treatment. Both A β 40 and A β 42 levels in cell lysates were increased by the treatment with GGOH with the accompanied increase in the ratio of A β 42 to A β 40 (Fig. 3). Since GGPP yields the same increase in intracellular A β as culture media, the geranylgeranyl isoprenoids GGPP and GGOH increase A β 42 production rather than stimulate its release from cells.

GGPP depletes APP-CTF β and APP-CTF α

Because A β is a product generated by γ -secretase processing of APP-CTF β , we examined the effect of GGPP and GGOH on the steady-state levels of APP-CTF β fragments in CHO-APP_{wt} cells. GGPP treatment reduced the cellular levels of both APP-CTF α and APP-CTF β (Fig. 4A). This reduction in APP-CTFs was not accompanied by a change in levels of full-length APP and therefore is not caused by retention of APP in early trafficking compartments or reduced APP synthesis (Fig. 4A). Similarly, a time course study revealed that GGOH reduced the levels of APP-CTF β as early as 6 h after the start of treatment, with no visible changes in the levels of full-length APP (Fig. 4B). In conclusion, both GGPP and GGOH increased the levels of A β 42 (Fig. 2) and decreased the steady-state levels of APP-CTF β at the same time, suggesting that the increase in A β 42 may be due to the stimulation of γ -secretase activity.

GGOH increases A β by stimulating γ -secretase

We observed that GGPP reduced the steady-state levels of both APP-CTF α and APP-CTF β , and at the same time preferentially increased A β 42. These data prompted us to hypothesize that treatment of cells with geranylgeranyl isoprenoids could cause stimulation of γ -secretase activity, leading to accelerated cleavage of both APP-CTF α and APP-CTF β and a simultaneous increase in A β 42 generation. To test our hypothesis that geranylgeranyl isoprenoids facilitate γ -secretase cleavage of APP, we treated CHO-APP_{wt} cells with GGOH in the presence of different concentrations of the γ -secretase inhibitor DAPT. As expected for a γ -secretase inhibitor, DAPT inhibited A β 40 (Fig. 5A) as well as A β 42 (Fig. 5B) and increased APP-CTF α and APP-CTF β (Fig. 5C) in a dose-dependent manner. At a low concentration (10 nM), DAPT slightly reduced A β 40 levels from control cells (open bars), but this reduction was more substantial in GGOH-treated cells (solid bars), effectively leveling the yield of A β 40 in the two groups (Fig. 5A). As previously reported, DAPT preferentially inhibits A β 40 more than A β 42 at low con-

centration, with 10 nM showing no change in A β 42 secreted from control cells (Fig. 5B). Nevertheless, even this low concentration inhibited A β 42 from isoprenoid-treated cells by almost 50% to yield the same level of A β 42 as control cells (Fig. 5B). In summary, GGPP increases A β 42 by stimulating γ -secretase activity, and this increase can be reversed by treatment with low doses of a γ -secretase inhibitor that does not affect control cells.

GGOH increases APP-CTF γ and γ -secretase activity

To independently confirm the stimulation of γ -secretase by GGOH treatment, we determined the yield of CTF γ in an *in vitro* γ -secretase assay established earlier in our laboratory (36). Because treatment with GGOH reduces the intracellular levels of the APP-CTF α and APP-CTF β substrates, the comparison of APP-CTF γ generation *in vitro* is likely to be compromised by the availability of substrate. We took advantage of the observation (Fig. 5C) that 50 nM DAPT equalizes CTFs in control and GGOH-treated cells to overcome this problem. Membrane fractions were prepared from cells treated with either 50 nM DAPT (control) or GGOH and 50 nM DAPT for 24 h, then incubated for 1 h at 37°C as described in Materials and Methods. APP-CTF γ generated during incubation *in vitro* was used as an indicator of γ -secretase activity in the membrane preparation. After γ -secretase cleavage, APP-CTF γ is re-

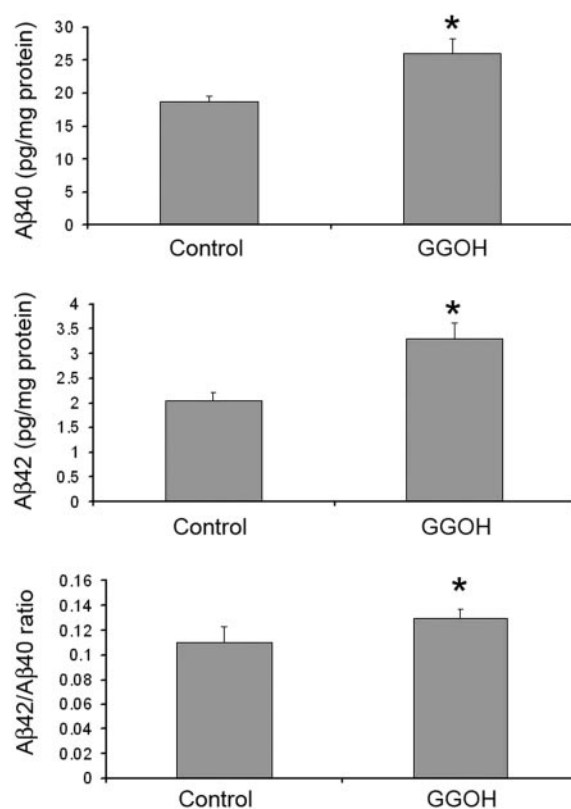


Figure 3. The effect of GGOH on the generation of intracellular A β . CHO-APP_{wt} cultures were treated with 10 $\mu\text{g/ml}$ GGOH for 24 h. Intracellular A β 40 and A β 42 were measured by ELISA assay of cell lysates.

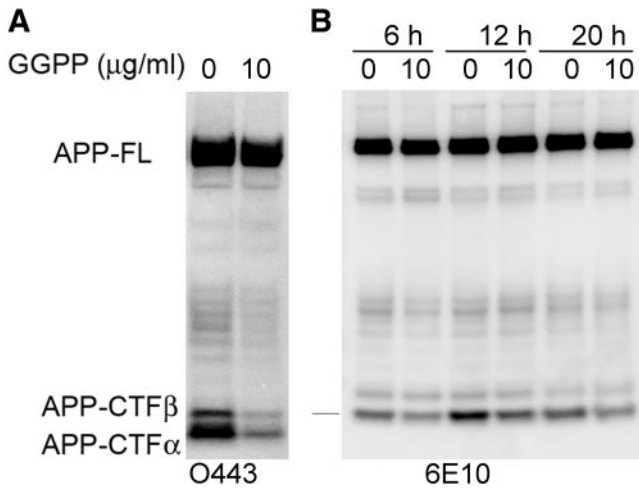


Figure 4. The effect of GGPP and GGOH on APP-CTF α and APP-CTF β . A) CHO-APPwt cells were treated with 15 μ g/ml GGPP for 24 h. APP and APP-derived fragments in cell lysates were determined by Western blot with O443. B) CHO-APPwt cells were treated with 10 μ g/ml GGOH for different durations as indicated. Cell lysates were immunoprecipitated with O443 antibody, then Western blotted with 6E10 to determine the levels of APP-CTF β .

leased from the membrane and can be detected in the supernatant obtained after removing the membranes by centrifugation for 30 min at 15,000 g . The majority of APP-CTF fragments was not processed, but remained membrane bound and fractionated in the pellet. After cotreatment with DAPT, the levels of APP-CTF fragments in the pellets of control and GGOH-treated cells were similar. However, the levels of APP-CTF γ in the supernatant, an indicator of γ -cleavage of APP-CTFs during *in vitro* incubation, were significantly increased in membrane preparations from GGOH-treated cells (Fig. 6A, B). This result shows that generation of APP-CTF γ from the cleavage of APP-CTF fragments during *in vitro* incubation was accelerated by GGOH treatment in culture, strongly suggesting that GGOH treatment enhances γ -secretase activity. Measurement of A β generated during *in vitro* incubation also showed a preferential increase in A β 42 (Fig. 6C). Taken together,

these results indicated that GGOH increases A β generation by altering the γ -cleavage of APP-CTF β .

GGOH increases active γ -secretase in DIMs

Previous studies have demonstrated that γ -secretase components form an active complex that is enriched in DIMs, where it interacts with the APP-CTF α/β substrate (32, 40, 42, 43). This active complex contains the mature glycosylated form of nicastrin, Pen-2, Aph1, and fragments of presenilin. Immature nicastrin stays in the dense detergent-soluble membrane fractions. To determine whether GGOH treatment affects the incorporation of active γ -secretase complex into the DIM fraction, we examined the effect of the distribution of γ -secretase components and APP-CTF fragments in DIM after the treatment with GGOH. CHAPSO, a zwitterionic detergent commonly used to examine the association between γ -secretase components in DIMs (32, 40, 42, 43), was used in this experiment, as the detergents more commonly used for extraction of DIMs, such as Triton-X100, disrupt the γ -secretase complex, leading to its inactivation. Cell cultures were treated with vehicle control or GGOH in the presence of 50 nM DAPT for 24 h in culture, homogenized in Tris-buffered saline containing 1% CHAPSO on ice, then subjected to flotation fractionation as described in Materials and Methods. As expected, flotillin, a marker of lipid rafts, was found in the interface between 5% and 35% sucrose in the buoyant fractions three and four. Multiple γ -secretase components were also found in this fraction (Fig. 7). As expected, immature (core glycosylated) nicastrin, a marker of γ -secretase in early cellular compartments prior to active γ -secretase complex formation, is seen almost exclusively in the detergent-soluble fractions in 45% sucrose (Fig. 7, fractions 8–10) acting as an internal control for the purity of the DIM fraction. Treatment with GGOH caused an increase in APP-CTFs in the DIM fractions compared with controls, although the levels and distribution of full-length APP were not affected (Fig. 7). Because the γ -secretase-mediated processing of APP-CTF fragments was stopped by DAPT, this result may reflect an increase in γ -secretase-bound APP-

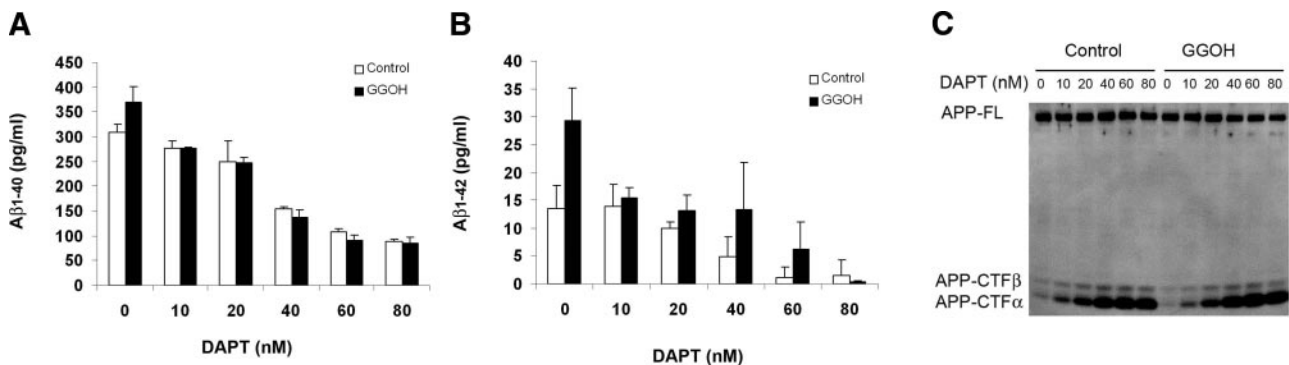


Figure 5. γ -Secretase-inhibitors block the GGOH-mediated increase in A β . CHO-APPwt cells were treated with 0 or 10 μ g/ml GGOH in the presence of different concentrations of γ -secretase inhibitor DAPT for 24 h. A) A β 40 in the media was measured by ELISA; B) A β 42 in the media was measured by ELISA; C) Steady-state levels of APP, APP-CTF α , and APP-CTF β were determined by Western blot analysis using the O443 antibody.

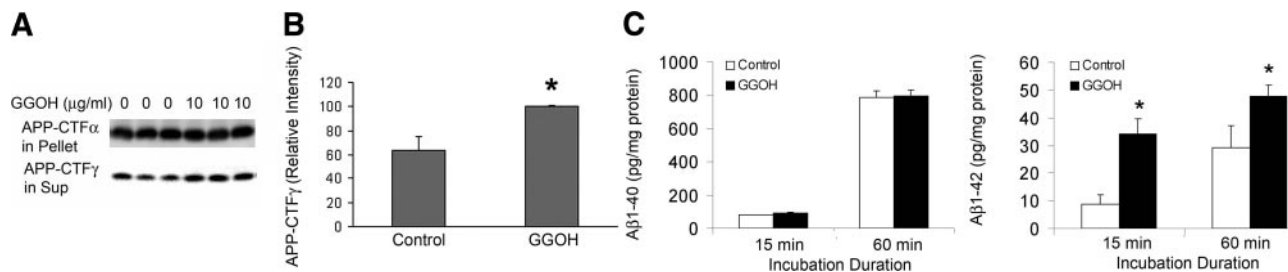


Figure 6. The effect of GGOH pretreatment on *in vitro* γ -secretase activity. CHO-APPwt cells were treated with 0 or 10 $\mu\text{g/ml}$ GGOH in the presence of γ -secretase inhibitor DAPT for 24 h. A) Levels of APP-CTF γ generated during *in vitro* incubation and APP-CTF α in pellet were determined by Western blot using O443 antibody. B) The relative density of APP-CTF γ was quantified by densitometry. C) Levels of A β 40 and A β 42 were determined by ELISA.

CTFs cotransported into the DIM fractions by the treatment of GGOH. Moreover, mature nicastrin, pen-2, and presenilin were also increased in the DIM fractions by the treatment with GGOH, confirming an increase in levels of the active γ -secretase complex in DIMs upon treatment with GGOH (Fig. 7).

DISCUSSION

Consistent with a recent report (33), we found that treatment of HEK293-APP^{swe} cells with lovastatin caused an increase in intracellular APP-CTF α and APP-CTF β levels, along with a decrease in the levels of A β in the media (Fig. 1A–C). The increase in intracellular APP-CTF α and APP-CTF β could either be due to an increase in APP-CTF production or a decrease in APP-CTF turnover. Since the levels of both APP-CTF α and APP-CTF β are increased, the increased production of the APP-CTFs would imply an increase in both α - and β -secretase activity. Parson *et al.* recently showed that lovastatin and simvastatin actually inhibit the dimerization of BACE and decrease BACE activity, making an increase in activity unlikely (44). We have also measured BACE activity in CHO cells after treatment with different concentrations of lovastatin and found no increase in BACE activity (data not shown), suggesting that increased APP-CTF β production may not cause the increase in intracellular APP-CTF β . Because both APP-CTF α and APP-CTF β are cleaved by γ -secretase and A β is generated following cleavage of APP-CTF β , an inhibition of γ -cleavage by lovastatin might explain all the changes observed after lovastatin treatment. The recovery of A β production as well as reversal of the lovastatin-mediated accumulation of APP-CTF α and APP-CTF β by GGPP (Fig. 1A–C) suggests a critical role of GGPP in mediating the inhibition of A β production by statins. Although cholesterol can increase A β yield by unknown mechanisms, it failed to reverse the inhibition of A β production by lovastatin (Fig. 1A). Inhibition of isoprenoid synthesis by lovastatin also results in the accumulation of APP, which is reversed by GGPP. However, unlike the reduction of A β , the APP accumulation is seen only with the high dose of lovastatin (5 and 10 μM). We thus conclude that this accumulation of APP is a secondary response mediated by a failure of

APP trafficking, which is reversed by GGPP treatment. Taken together, these data support our hypothesis that inhibition of GGPP synthesis may play a critical role in statin-mediated changes in APP processing and A β generation, possibly by inhibiting γ -secretase-mediated processing of APP-CTF β . A similar result was also obtained with FPP (data not shown), suggesting that multiple isoprenoids can foster A β production.

Consistent with the concept that inhibiting the synthesis of GGPP will inhibit γ -secretase activity, lovastatin treatment results in an accumulation of intracellular APP-CTF α and APP-CTF β . Conversely, we find that addition of GGPP or its precursor GGOH reversed the increase of intracellular APP-CTF β and APP-CTF α (Fig. 4), suggesting that inhibition of isoprenoid synthesis, rather than cholesterol, is responsible for accumulation of CTF α and CTF β . The observation that inhibition of α -secretase by DAPT can reverse the drop in APP-CTF α and APP-CTF β levels (Fig. 5C) further supports the conclusion that the GGPP-stimulation of A β levels is due to an increase in γ -secretase activity. Membrane preparations from cells treated with GGOH generate more APP-CTF γ than controls during *in vitro* incubation, indicating that preconditioning of cells with GGOH treatment facilitates γ -secretase cleavage of APP-CTF α and APP-CTF β (Fig. 6A, B). Since GGOH affects both CTF β and CTF α proportionately, we expect it to increase the γ -secretase product of CTF α -P3 as well. It will be useful to examine the changes in this peptide to analyze the trafficking and processing of APP by both α - and β -secretase pathways in future studies. Treatment with GGPP or GGOH causes a preferential increase in A β 42 production (Fig. 2), suggesting that GGPP and GGOH favor production of the longer, potentially pathogenic A β 42 fragments, like a number of familial AD mutations. Taken together, our data support the hypothesis that geranylgeranyl isoprenoids stimulate γ -cleavage of APP-CTF fragments and at the same time preferentially increase the cleavage of APP-CTF β to A β 42. Geranylgeranyl isoprenoids may directly modify the γ -secretase complex as previously suggested (35). Alternatively, GGPP may regulate the trafficking of APP-CTF β and/or γ -secretase components to a specific subcellular site, where APP-CTF β may not only be cleaved at a faster rate but also cleaved more favorably at the site of A β 42. Since GGOH treatment increases the levels of APP-CTF α

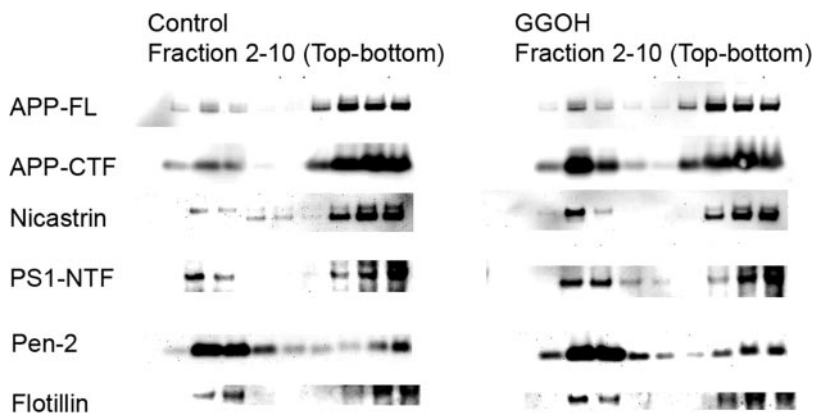


Figure 7. GGOH-induced distribution of γ -secretase and APP-CTFs in DIMs. CHO-APPwt cells were treated with 0 or 10 μ g/ml GGOH in the presence of γ -secretase inhibitor DAPT for 24 h. After treatment, cells were lysed in 1% CHAPSO, then separated by flotation fractionation. APP, APP-CTF fragments, and γ -secretase components in each fraction were detected by Western blot.

and APP-CTF β along with γ -secretase components into the DIM fraction, it is likely that GGPP fosters the formation and/or stabilization of the γ -secretase complex (Fig. 7).

DIMs have been shown to be a major site for γ -cleavage of APP-CTF fragments and A β generation (32, 40, 42, 43). The increased partition of APP-CTF fragments into DIMs by treatment with GGOH likely provides more substrate to the sites where active γ -secretase exists, thus facilitating the γ -cleavage of APP-CTF fragments. In addition, the incorporation of mature nicastrin and other γ -secretase components into DIMs is also increased by geranylgeraniol, suggesting an increase in the active γ -secretase complex in DIMs. This is consistent with a recent report showing that statins reduce the incorporation of γ -secretase components into DIMs at least partly through the inhibition of GGPP synthesis (40). Thus, the increased availability of GGOH to cells can increase both the incorporation of active γ -secretase complex in DIMs and the availability of its substrates. However, the exact mechanism by which GGPP mediates an increased incorporation of APP-CTF fragments and γ -secretase still needs to be identified. For example, we are currently unable to distinguish between a direct effect of GGPP incorporation into membranes and a GGPP-mediated signaling pathway. Regardless of the mechanism of stimulation, the data showing a higher yield of active γ -secretase in DIM fractions from GGOH-treated cells suggests that the ultimate result is a direct increase in levels of active γ -secretase. We have not examined the effects of GGOH on β -secretase in detail and cannot rule out multiple pleiotropic effects of GGOH, but can confirm that an increase in γ -secretase is one of the affected pathways. Since GGPP treatment mimics familial AD mutations by increasing levels of A β 42 and modulating γ -secretase, these studies may provide novel insights into the mechanisms by which these mutations increase A β 42 and also identify potential physiological failures that can phenocopy these mutations in typical late-onset AD (19). FJ

The authors would like to thank Ms. Christina Demos and Meera Parasuraman for help in proofreading the document

and Dr. Todd Golde for kindly providing the stable CHO cell line, 2B7, expressing wild-type APP. This work was supported by grants from Alzheimer's Association (NIRG-05-12773), the National Institutes of Health (AG023055 and AG028544), and a grant (K.S.) and gift fund (Y.Z.) from Neuroscience Education and Research Foundation (managed by the late Dr. Leon Thal).

REFERENCES

1. Sambamurti, K., Granholm, A. C., Kindy, M. S., Bhat, N. R., Greig, N. H., Lahiri, D. K., and Mintzer, J. E. (2004) Cholesterol and Alzheimer's disease: clinical and experimental models suggest interactions of different genetic, dietary and environmental risk factors. *Curr. Drug Targets* **5**, 517-528
2. Corder, E. H., Saunders, A. M., Strittmatter, W. J., Schmechel, D. E., Gaskell, P. C., Small, G. W., Roses, A. D., Haines, J. L., and Pericak-Vance, M. A. (1993) Gene dose of apolipoprotein E type 4 allele and the risk of Alzheimer's disease in late onset families. *Science* **261**, 921-923
3. Poirier, J., Davignon, J., Bouthillier, D., Kogan, S., Bertrand, P., and Gauthier, S. (1993) Apolipoprotein E polymorphism and Alzheimer's disease. *Lancet* **342**, 697-699
4. Burke, J. R., and Roses, A. D. (1991) Genetics of Alzheimer's disease. *Int. J. Neurol.* **26**, 41-51
5. Strittmatter, W. J., Saunders, A. M., Schmechel, D., Pericak-Vance, M., Enghild, J., Salvesen, G. S., and Roses, A. D. (1993) Apolipoprotein E: high-avidity binding to beta-amyloid and increased frequency of type 4 allele in late-onset familial Alzheimer disease. *Proc. Natl. Acad. Sci. U. S. A.* **90**, 1977-1981
6. Jarvik, G. P., Wijsman, E. M., Kukull, W. A., Schellenberg, G. D., Yu, C., and Larson, E. B. (1995) Interactions of apolipoprotein E genotype, total cholesterol level, age, and sex in prediction of Alzheimer's disease: a case-control study. *Neurology* **45**, 1092-1096
7. Kuo, Y. M., Emmerling, M. R., Bisgaier, C. L., Essenburg, A. D., Lampert, H. C., Drumm, D., and Roher, A. E. (1998) Elevated low-density lipoprotein in Alzheimer's disease correlates with brain Abeta 1-42 levels. *Biochem. Biophys. Res. Commun.* **252**, 711-715
8. Jick, H., Zornberg, G. L., Jick, S. S., Seshadri, S., and Drachman, D. A. (2000) Statins and the risk of dementia. *Lancet* **356**, 1627-1631
9. Wolozin, B., Kellman, W., Ruosseau, P., Celesia, G. G., and Siegel, G. (2000) Decreased prevalence of Alzheimer disease associated with 3-hydroxy-3-methylglutaryl coenzyme A reductase inhibitors. *Arch. Neurol.* **57**, 1439-1443
10. Zamrini, E., McGwin, G., and Roseman, J. M. (2004) Association between statin use and Alzheimer's disease. *Neuroepidemiology* **23**, 94-98
11. Petanceska, S. S., DeRosa, S., Olm, V., Diaz, N., Sharma, A., Thomas-Bryant, T., Duff, K., Pappolla, M., and Refolo, L. M.

- (2002) Statin therapy for Alzheimer's disease: will it work? *J. Mol. Neurosci.* **19**, 155–161
12. Parvathy, S., Ehrlich, M., Pedrini, S., Diaz, N., Refolo, L., Buxbaum, J. D., Bogush, A., Petanceska, S., and Gandy, S. (2004) Atorvastatin-induced activation of Alzheimer's alpha secretase is resistant to standard inhibitors of protein phosphorylation-regulated ectodomain shedding. *J. Neurochem.* **90**, 1005–1010
 13. Wolozin, B. (2002) Cholesterol and Alzheimer's disease. *Biochem. Soc. Trans.* **30**, 525–529
 14. Fassbender, K., Simons, M., Bergmann, C., Stroick, M., Lutjohann, D., Keller, P., Runz, H., Kuhl, S., Bertsch, T., von Bergmann, K., et al. (2001) Simvastatin strongly reduces levels of Alzheimer's disease beta-amyloid peptides Abeta 42 and Abeta 40 in vitro and in vivo. *Proc. Natl. Acad. Sci. U. S. A.* **98**, 5856–5861
 15. Buxbaum, J. D., Cullen, E. I., and Friedhoff, L. T. (2002) Pharmacological concentrations of the HMG-CoA reductase inhibitor lovastatin decrease the formation of the Alzheimer beta-amyloid peptide in vitro and in patients. *Front. Biosci.* **7**, a50–a59
 16. Simons, M., Schwarzler, F., Lutjohann, D., von Bergmann, K., Beyreuther, K., Dichgans, J., Wormstall, H., Hartmann, T., and Schulz, J. B. (2002) Treatment with simvastatin in normocholesterolemic patients with Alzheimer's disease: A 26-week randomized, placebo-controlled, double-blind trial. *Ann. Neurol.* **52**, 346–350
 17. Sjogren, M., Gustafsson, K., Syversen, S., Olsson, A., Edman, A., Davidsson, P., Wallin, A., and Blennow, K. (2003) Treatment with simvastatin in patients with Alzheimer's disease lowers both alpha- and beta-cleaved amyloid precursor protein. *Dement. Geriatr. Cogn. Disord.* **16**, 25–30
 18. Ehehalt, R., Keller, P., Haass, C., Thiele, C., and Simons, K. (2003) Amyloidogenic processing of the Alzheimer beta-amyloid precursor protein depends on lipid rafts. *J. Cell Biol.* **160**, 113–123
 19. Hardy, J., and Selkoe, D. J. (2002) The amyloid hypothesis of Alzheimer's disease: progress and problems on the road to therapeutics. *Science* **297**, 353–356
 20. Sambamurti, K., Greig, N. H., and Lahiri, D. K. (2002) Advances in the cellular and molecular biology of the beta-amyloid protein in Alzheimer's disease. *Neuromol. Med.* **1**, 1–31
 21. Sambamurti, K., Suram, A., Venugopal, C., Prakasam, A., Zhou, Y., Lahiri, D. K., and Greig, N. H. (2006) A partial failure of membrane protein turnover may cause Alzheimer's disease: a new hypothesis. *Curr. Alzheimer Res.* **3**, 81–90
 22. Simons, M., Keller, P., De Strooper, B., Beyreuther, K., Dotti, C. G., and Simons, K. (1998) Cholesterol depletion inhibits the generation of beta-amyloid in hippocampal neurons. *Proc. Natl. Acad. Sci. U. S. A.* **95**, 6460–6464
 23. Puglielli, L., Konopka, G., Pack-Chung, E., Ingano, L. A., Berezovska, O., Hyman, B. T., Chang, T. Y., Tanzi, R. E., and Kovacs, D. M. (2001) Acyl-coenzyme A: cholesterol acyltransferase modulates the generation of the amyloid beta-peptide. *Nat. Cell Biol.* **3**, 905–912
 24. Hutter-Paier, B., Huttunen, H. J., Puglielli, L., Eckman, C. B., Kim, D. Y., Hofmeister, A., Moir, R. D., Domnitz, S. B., Frosch, M. P., Windisch, M., and Kovacs, D. M. (2004) The ACAT inhibitor CP-113,818 markedly reduces amyloid pathology in a mouse model of Alzheimer's disease. *Neuron* **44**, 227–238
 25. Sparks, D. L., Scheff, S. W., Hunsaker, J. C., 3rd, Liu, H., Landers, T., and Gross, D. R. (1994) Induction of Alzheimer-like beta-amyloid immunoreactivity in the brains of rabbits with dietary cholesterol. *Exp. Neurol.* **126**, 88–94
 26. Sparks, D. L., Kuo, Y. M., Roher, A., Martin, T., and Lukas, R. J. (2000) Alterations of Alzheimer's disease in the cholesterol-fed rabbit, including vascular inflammation. Preliminary observations. *Ann. N. Y. Acad. Sci.* **903**, 335–344
 27. Refolo, L. M., Malester, B., LaFrancois, J., Bryant-Thomas, T., Wang, R., Tint, G. S., Sambamurti, K., Duff, K., and Pappolla, M. A. (2000) Hypercholesterolemia accelerates the Alzheimer's amyloid pathology in a transgenic mouse model. *Neurobiol. Dis.* **7**, 321–331
 28. Refolo, L. M., Pappolla, M. A., LaFrancois, J., Malester, B., Schmidt, S. D., Thomas-Bryant, T., Tint, G. S., Wang, R., Mercken, M., Petanceska, S. S., and Duff, K. E. (2001) A cholesterol-lowering drug reduces beta-amyloid pathology in a transgenic mouse model of Alzheimer's disease. *Neurobiol. Dis.* **8**, 890–899
 29. Howland, D. S., Trusko, S. P., Savage, M. J., Reaume, A. G., Lang, D. M., Hirsch, J. D., Macda, N., Siman, R., Greenberg, B. D., Scott, R. W., and Flood, D. G. (1998) Modulation of secreted beta-amyloid precursor protein and amyloid beta-peptide in brain by cholesterol. *J. Biol. Chem.* **273**, 16576–16582
 30. George, A. J., Holsinger, R. M., McLean, C. A., Laughton, K. M., Beyreuther, K., Evin, G., Masters, C. L., and Li, Q. X. (2004) APP intracellular domain is increased and soluble Abeta is reduced with diet-induced hypercholesterolemia in a transgenic mouse model of Alzheimer disease. *Neurobiol. Dis.* **16**, 124–132
 31. Fagan, A. M., Christopher, E., Taylor, J. W., Parsadanian, M., Spinner, M., Watson, M., Fryer, J. D., Wahrle, S., Bales, K. R., Paul, S. M., and Holtzman, D. M. (2004) ApoAI deficiency results in marked reductions in plasma cholesterol but no alterations in amyloid-beta pathology in a mouse model of Alzheimer's disease-like cerebral amyloidosis. *Am. J. Pathol.* **165**, 1413–1422
 32. Wada, S., Morishima-Kawashima, M., Qi, Y., Misono, H., Shimada, Y., Ohno-Iwashita, Y., and Ihara, Y. (2003) Gamma-secretase activity is present in rafts but is not cholesterol-dependent. *Biochemistry* **42**, 13977–13986
 33. Cole, S. L., Grudzien, A., Manhart, I. O., Kelly, B. L., Oakley, H., and Vassar, R. (2005) Statins cause intracellular accumulation of amyloid precursor protein, beta-secretase-cleaved fragments, and amyloid beta-peptide via an isoprenoid-dependent mechanism. *J. Biol. Chem.* **280**, 18755–18770
 34. Zhou, Y., Su, Y., Li, B., Liu, F., Ryder, J. W., Wu, X., Gonzalez-DeWhitt, P. A., Gelfanova, V., Hale, J. E., May, P. C., et al. (2003) Nonsteroidal anti-inflammatory drugs can lower amyloidogenic Abeta42 by inhibiting Rho. *Science* **302**, 1215–1217
 35. Kukar, T., Murphy, M. P., Eriksen, J. L., Sagi, S. A., Weggen, S., Smith, T. E., Ladd, T., Khan, M. A., Kache, R., Beard, J., et al. (2005) Diverse compounds mimic Alzheimer disease-causing mutations by augmenting Abeta42 production. *Nat. Med.* **11**, 545–550
 36. Pinnix, I., Musunuru, U., Tun, H., Sridharan, A., Golde, T., Eckman, C., Ziani-Cherif, C., Onstead, L., and Sambamurti, K. (2001) A novel gamma-secretase assay based on detection of the putative C-terminal fragment-gamma of amyloid beta protein precursor. *J. Biol. Chem.* **276**, 481–487
 37. Skovronsky, D. M., Doms, R. W., and Lee, V. M. (1998) Detection of a novel intraneuronal pool of insoluble amyloid beta protein that accumulates with time in culture. *J. Cell Biol.* **141**, 1031–1039
 38. Ohnuma, S., Watanabe, M., and Nishino, T. (1996) Identification and characterization of geranylgeraniol kinase and geranylgeranyl phosphate kinase from the Archaeobacterium *Sulfolobus acidocaldarius*. *J. Biochem. (Tokyo)* **119**, 541–547
 39. Kottl, T. J., Ramirez, D. M., Pfeiffer, B. E., Huber, K. M., and Russell, D. W. (2006) Brain cholesterol turnover required for geranylgeraniol production and learning in mice. *Proc. Natl. Acad. Sci. U. S. A.* **103**, 3869–3874
 40. Urano, Y., Hayashi, I., Isoo, N., Reid, P. C., Shibasaki, Y., Noguchi, N., Tomita, T., Iwatsubo, T., Hamakubo, T., and Kodama, T. (2005) Association of active {gamma}-secretase complex with lipid rafts. *J. Lipid Res.* **46**, 904–912
 41. Ownby, S. E., and Hohl, R. J. (2003) Isoprenoid alcohols restore protein isoprenylation in a time-dependent manner independent of protein synthesis. *Lipids* **38**, 751–759
 42. Wahrle, S., Das, P., Nyborg, A. C., McLendon, C., Shoji, M., Kawarabayashi, T., Younkin, L. H., Younkin, S. G., and Golde, T. E. (2002) Cholesterol-dependent gamma-secretase activity in buoyant cholesterol-rich membrane microdomains. *Neurobiol. Dis.* **9**, 11–23
 43. Vetrivel, K. S., Cheng, H., Lin, W., Sakurai, T., Li, T., Nukina, N., Wong, P. C., Xu, H., and Thinakaran, G. (2004) Association of gamma-secretase with lipid rafts in post-golgi and endosome membranes. *J. Biol. Chem.* **279**, 44945–44954
 44. Parsons, R. B., Price, G. C., Farrant, J. K., Subramaniam, D., Adeagbo-Sheikh, J., and Austen, B. M. (2006) Statins inhibit the dimerisation of beta-secretase via both isoprenoid- and cholesterol-mediated mechanisms. *Biochem. J.* **399**, 205–214

Received for publication March 15, 2007.

Accepted for publication July 5, 2007.